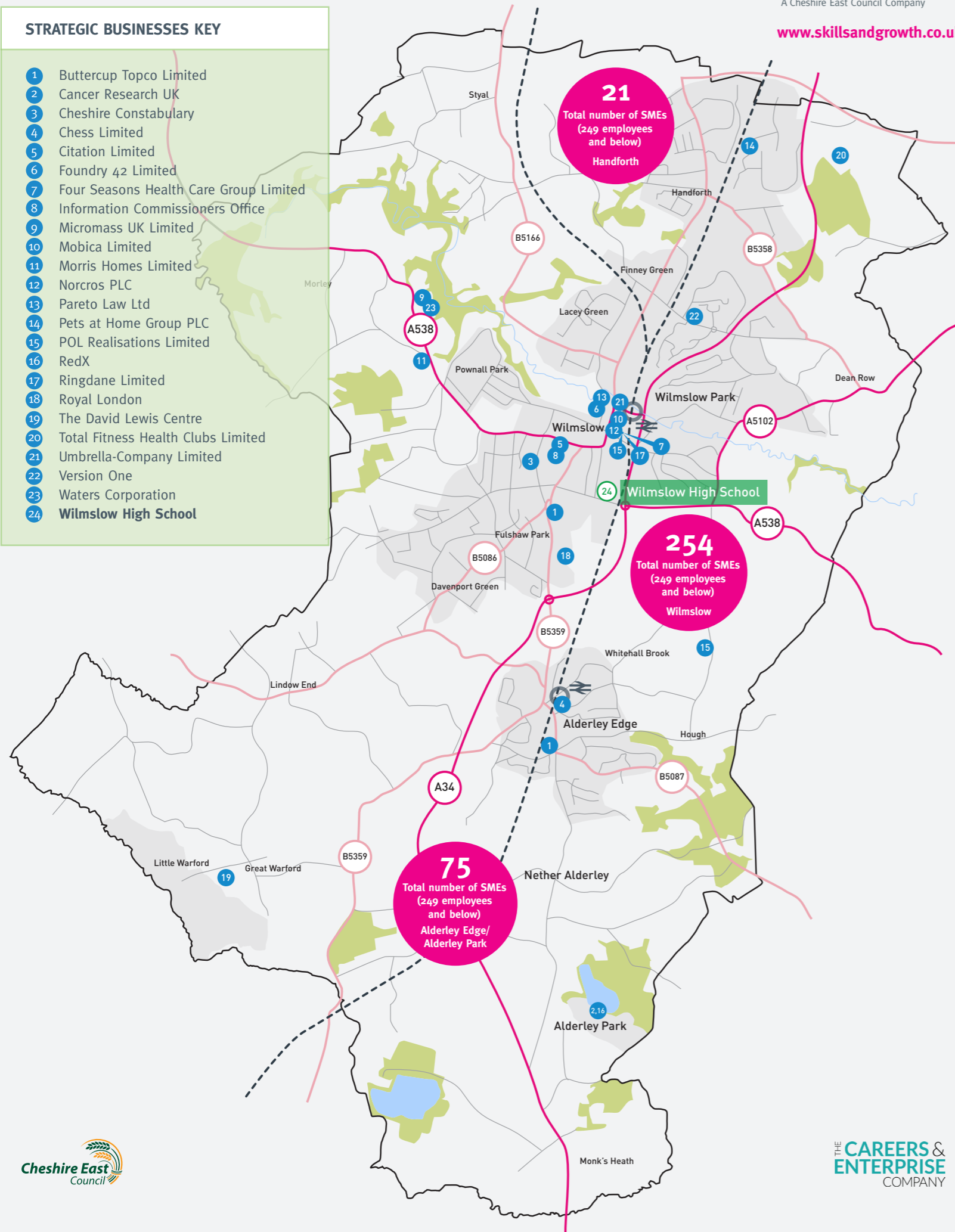


STRATEGIC BUSINESSES KEY

- 1 Buttercup Topco Limited
- 2 Cancer Research UK
- 3 Cheshire Constabulary
- 4 Chess Limited
- 5 Citation Limited
- 6 Foundry 42 Limited
- 7 Four Seasons Health Care Group Limited
- 8 Information Commissioners Office
- 9 Micromass UK Limited
- 10 Mobica Limited
- 11 Morris Homes Limited
- 12 Norcross PLC
- 13 Pareto Law Ltd
- 14 Pets at Home Group PLC
- 15 POL Realisations Limited
- 16 RedX
- 17 Ringdane Limited
- 18 Royal London
- 19 The David Lewis Centre
- 20 Total Fitness Health Clubs Limited
- 21 Umbrella-Company Limited
- 22 Version One
- 23 Waters Corporation
- 24 **Wilmslow High School**



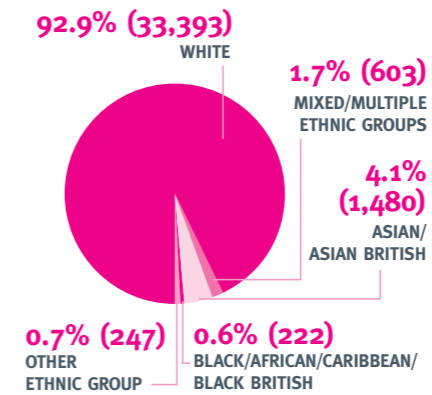
RESIDENT POPULATION

By gender and age.

POPULATION COUNT - ALL AGES - 35,945

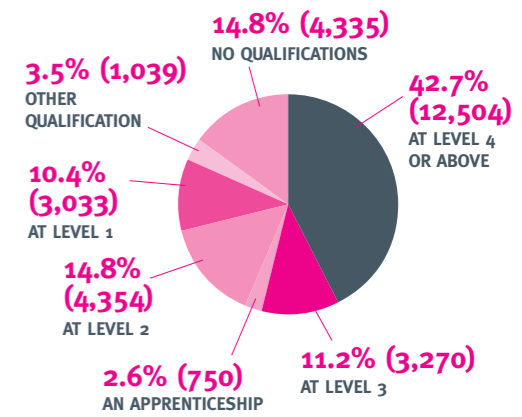
All Males	17,556	48.8%
All Females	18,389	51.2%
Age 0 to 15	6,660	18.5%
Age 16 to 64	22,315	62.1%
Age 65 and above	6,970	19.4%
Age 16 to 17	839	2.3%
Age 18 to 19	678	1.9%
Age 20 to 24	1,438	4.0%

Ethnic group



QUALIFICATIONS

Highest qualification held by residents aged 16 and above.



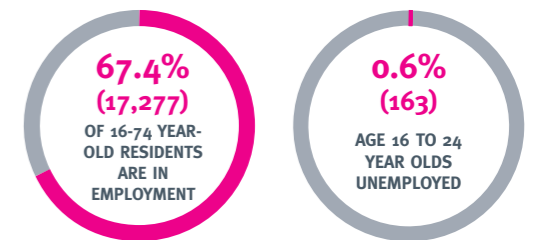
EMPLOYMENT

18,620

TOTAL NUMBER OF 16-74 YEAR-OLD RESIDENTS WHO ARE ECONOMICALLY ACTIVE

17,277

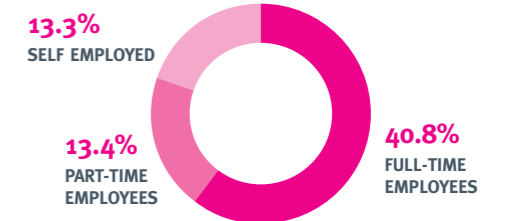
TOTAL NUMBER OF 16-74 YEAR-OLD RESIDENTS IN EMPLOYMENT



SCHOOL PUPIL FORECAST FOR THE WILMSLOW AREA

ACADEMIC AGE	2019	2020	2021	2022	2023
Academic Years 7-11 (11/16 year olds)	1,649	1,733	1,795	1,844	1,896
Year 12 (16/17 year olds)	256	245	252	273	279
Year 13 (17/18 year olds)	220	237	226	233	253
Total forecast numbers	2,125	2,215	2,273	2,350	2,428

*based on the forecasts submitted to the DfE in the 2018 School Capacity collection.

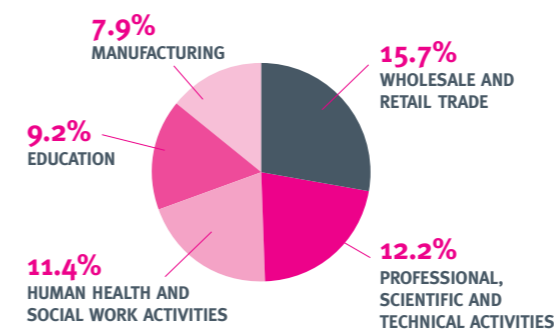


NUMBER OF 16-74 YEAR-OLD RESIDENTS WHO ARE...

Full-time employees	10,460
Part-time employees	3,422
Self employed	3,395

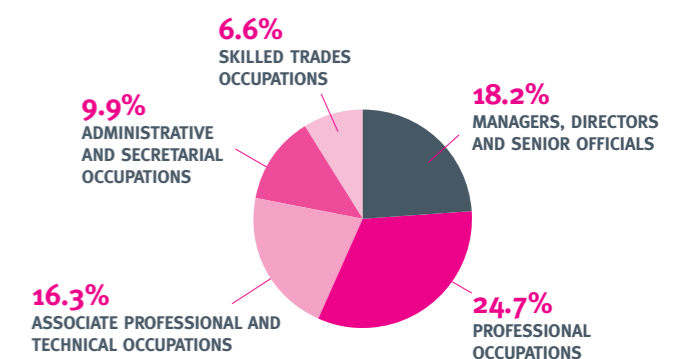
TOP EMPLOYMENT SECTORS

SECTOR COUNT - AGES 16 TO 74	Count	Percentage
Wholesale and retail trade; repair of motor vehicles and motor cycles	2,787	15.7%
Professional, scientific and technical activities	2,178	12.2%
Human health and social work activities	2,035	11.4%
Education	1,630	9.2%
Manufacturing	1,413	7.9%



TOP 5 OCCUPATIONS

OCCUPATION COUNT - AGES 16 TO 74	Count	Percentage
Professional occupations	4,389	24.7%
Managers, directors and senior officials	3,243	18.2%
Associate professional and technical occupations	2,900	16.3%
Administrative and secretarial occupations	1,762	9.9%
Skilled trades occupations	1,171	6.6%



Figures are sourced from the 2011 Census using NOMIS Local Area Reports; except for the school pupil forecast for the Wilmslow area