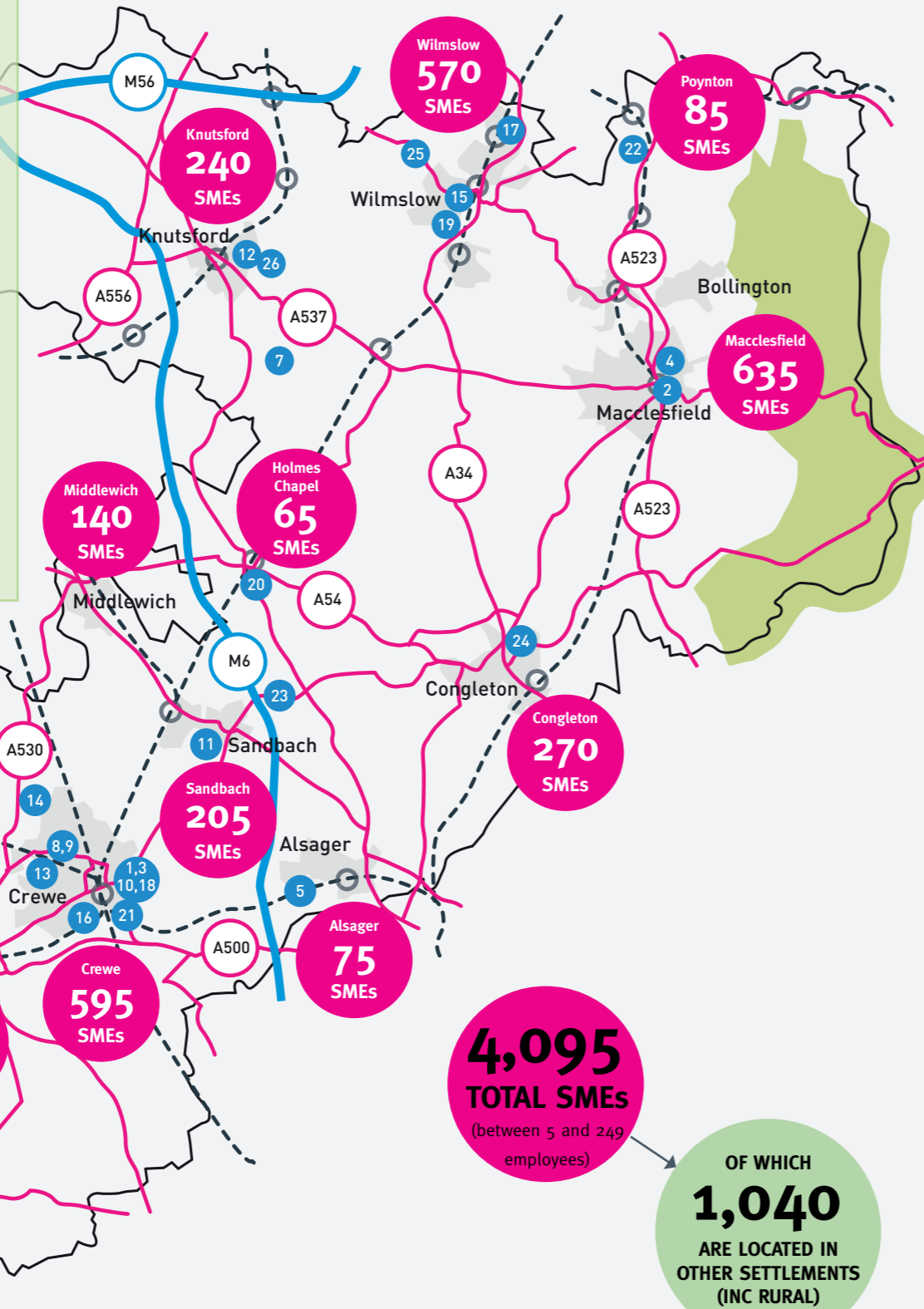


STRATEGIC BUSINESSES KEY

large companies with a high profile across the Borough

- 1 Air Products PLC
- 2 Ashfield Healthcare Communications
- 3 Assurant Solutions
- 4 Astra Zeneca
- 5 BAE Systems
- 6 Bakkavor
- 7 Barclays Bank Radbroke
- 8 Bentley Motor Cars Ltd
- 9 Bombardier Transportation UK Ltd
- 10 Brightstar
- 11 Cheshire East Council
- 12 Fishawack Group
- 13 Kindertons Topco
- 14 Mid Cheshire Hospital
- 15 Mobica Limited
- 16 Morning Foods Limited
- 17 Pets at Home Group PLC
- 18 Radius Payment Solutions Limited
- 19 Royal London
- 20 Recipharm
- 21 Ryman Ltd
- 22 Senior Aerospace BWT
- 23 Sibelco
- 24 Siemens
- 25 Waters Corporation
- 26 Wood Group



4,095
TOTAL SMEs
(between 5 and 249 employees)

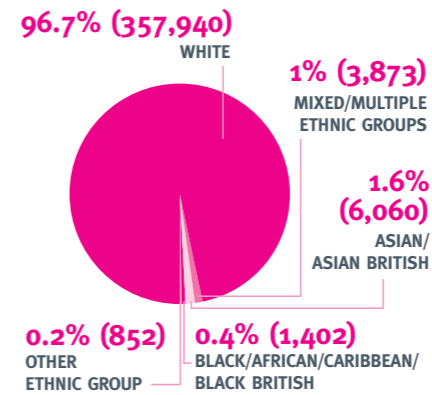
OF WHICH
1,040
ARE LOCATED IN OTHER SETTLEMENTS (INC RURAL)

RESIDENT POPULATION

By gender and age.

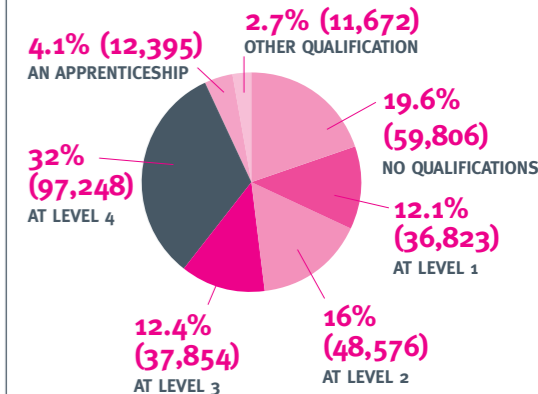
Category	Count	Percentage
All Males	181,409	49.0%
All Females	188,718	51.0%
Total	370,127	
Age 0 to 15	65,753	17.9%
Age 16 to 64	233,002	62.9%
Age 65 and above	71,372	19.3%
Age 16 to 17	9,249	2.5%
Age 18 to 19	8,398	2.3%
Age 20 to 24	18,615	5.0%

Ethnic group

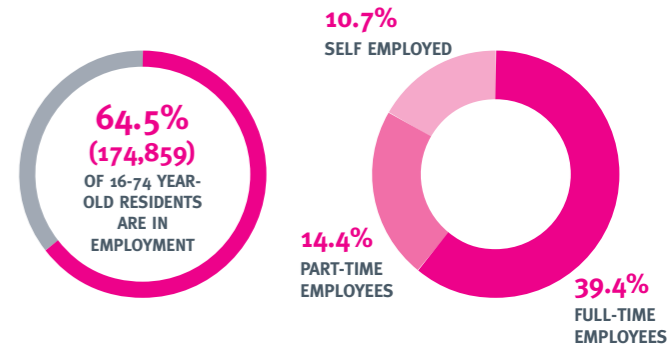
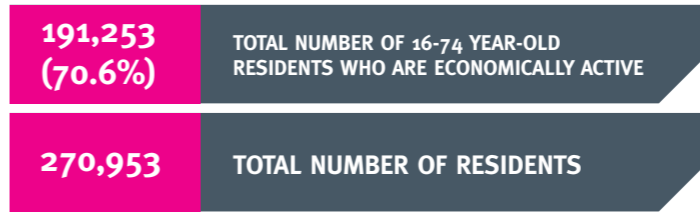


QUALIFICATIONS

Highest qualification held by residents aged 16 and above.



EMPLOYMENT



SCHOOL PUPIL FORECAST FOR THE CHESHIRE EAST AREA

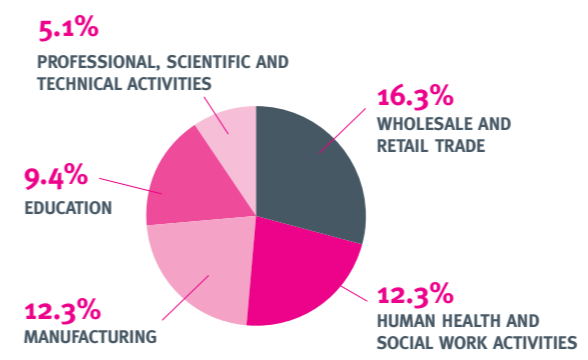
ACADEMIC AGE	2019	2020	2021	2022	2023
Academic Years 7-11 (11/16 year olds)	20,623	21,343	21,869	22,330	22,586
Year 12 (16/17 year olds)	1,976	1,991	2,132	2,294	2,432
Year 13 (17/18 year olds)	1,563	1,718	1,737	1,876	2,031
Total forecast numbers	24,162	25,052	25,737	26,499	27,049

*based on the forecasts submitted to the DfE in the 2018 School Capacity collection.

NUMBER OF 16-74 YEAR-OLD RESIDENTS WHO ARE...		
In employment	174,859	64.5%
Full-time employees	106,863	39.4%
Part-time employees	38,940	14.4%
Self employed	29,056	10.7%

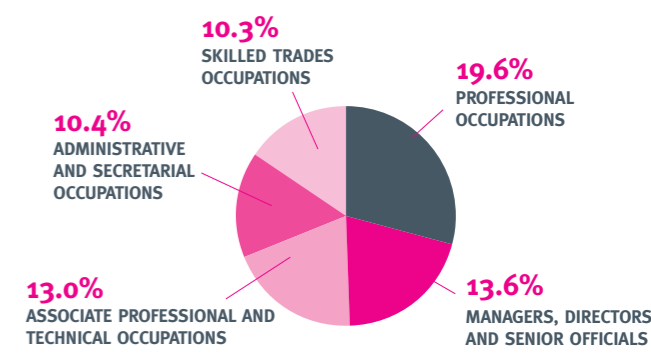
TOP EMPLOYMENT SECTORS

SECTOR COUNT - AGES 16 TO 74		
Wholesale & retail trade; repair of motor vehicles and motor cycles	29,530	16.3%
Human health and social work activities	22,343	12.3%
Manufacturing	22,226	12.3%
Education	16,972	9.4%
Professional, scientific and technical activities	9,152	5.1%



TOP 5 OCCUPATIONS

OCCUPATION COUNT - AGES 16 TO 74		
Professional occupations	35,525	19.6%
Managers, directors and senior officials	24,551	13.6%
Associate professional and technical occupations	23,592	13.0%
Administrative and secretarial occupations	18,819	10.4%
Skilled trades occupations	18,711	10.3%



Figures are sourced from the 2011 Census using NOMIS Local Area Reports; except for the school pupil forecast for the Cheshire East area